

SOFT FLOSS

soft and fresh as a snowflake



ProfiMed

USEFUL INFORMATION

Great for sensitive gums, the Soft Floss takes our Riser® Expanding to a whole new level: thanks to a special procedure, we have created a yarn that comes already expanded: it will clean where no toothbrush has gone before!

The Soft Floss can be customized in terms of **thickness**, in fact you can choose between 3 or 4 heads of Riser®. Also, it can be customized in terms of **colors** and **aromas**!

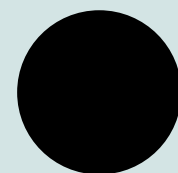
HOW DO I CHOOSE THE THICKNESS OF MY SOFT FLOSS?

All the filaments of the Riser® Expanding are twisted, creating a “head” (96 filaments). Each head can be coupled with other heads, forming a 3 or 4-head floss. The greater the number of heads, the thicker the floss!

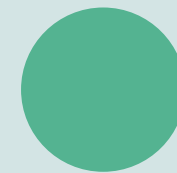
THE HEADS CAN BE COUPLED ACCORDING TO THE FOLLOWING AVAILABLE COLORS*:



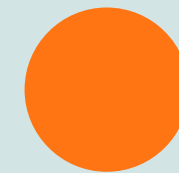
WHITE



BLACK



MINT GREEN



ORANGE

*2 COMBINATIONS OF COLORS MAX.
RECYCLED SOFT FLOSS AVAILABLE IN WHITE ONLY
OTHER COLORS UPON REQUEST

YOUR SOFT FLOSS CAN COME IN VARIOUS AROMAS:

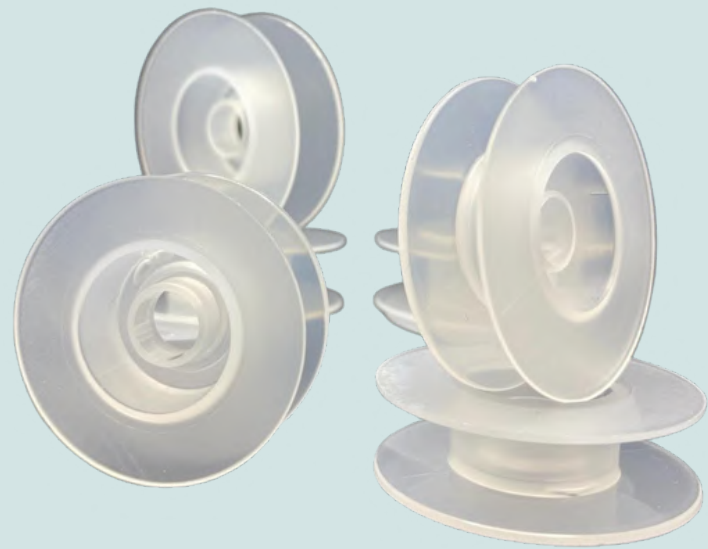
For this special floss we usually combine two different kinds of aromas: liquid and powder. We have already tested two variations that will make your mouth rejoice and burst in a myriad of flavours: **cinnamon** or **mint** aromas. Other flavors are available upon request.

HOW TO CREATE YOUR OWN PRODUCT

Floss (3,4-heads of Riser® floss in the color and aroma you prefer)



Flanged bobbin core



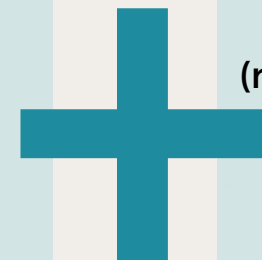
Recyclable plastic containers



(not available for the US market)



Sustainable cardboard boxes



OR

ProfiMed

NEW IN: CARDBOARD PACKAGING



Ready for the most eco-friendly blister for dental floss ever?
Say hello to our **revolutionary paperboard-on-paperboard blister**, the blister that says bye-bye to plastic valves and makes Mother Nature smile!
Only available at ProfiMed! Where else?

CONTACTS

ProfiMed
Team



Elena Ghelfi
Head of Sales Department

✉ sales1@profimed.it

☎ +39 (0)287251335



Iris Zacco
Jr. Account Manager

✉ sales3@profimed.it

☎ +39 (0)287251336



Svetlana Antonova
Account Manager

✉ sales_assistant@profimed.it

☎ +39 (0)287251327



Jasmine Porpora
Sales Assistant

✉ sales2@profimed.it

☎ +39 (0)287251300



Cristina Fornaro
Sales Assistant

✉ sales@profimed.it

☎ +39 (0)287251357

